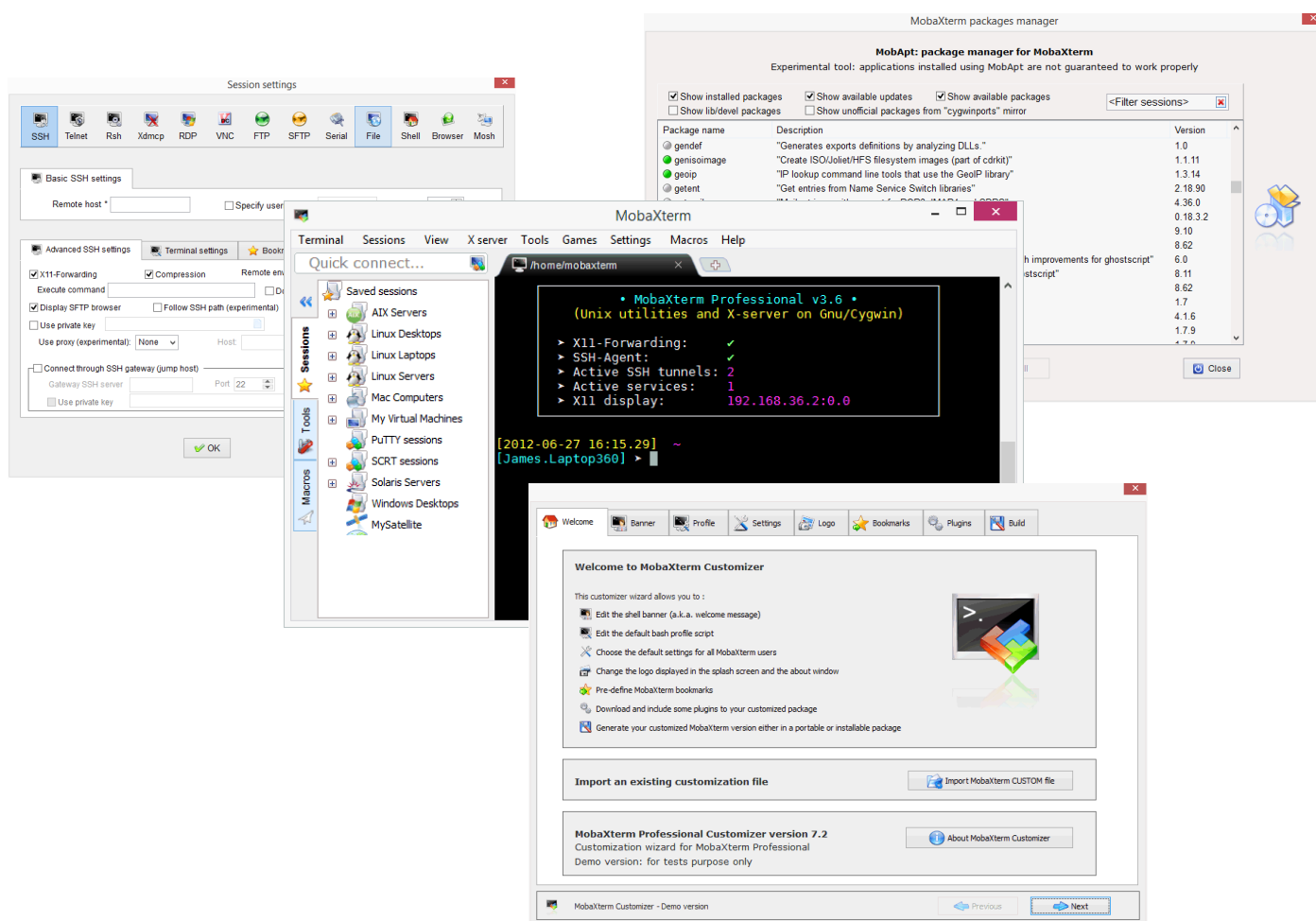




MOBAXTERM PROFESSIONAL EDITION SETUP AND INSTALLATION GUIDE





Index

1. [Introduction](#)
2. [Download your MobaXterm professional package](#)
3. [Use MobaXterm portable version](#)
4. [How to get MobaXterm installable version ?](#)
5. [How to customize MobaXterm ?](#)
6. [What is the best way to secure MobaXterm installation?](#)
7. [More help for using MobaXterm?](#)



1. Introduction

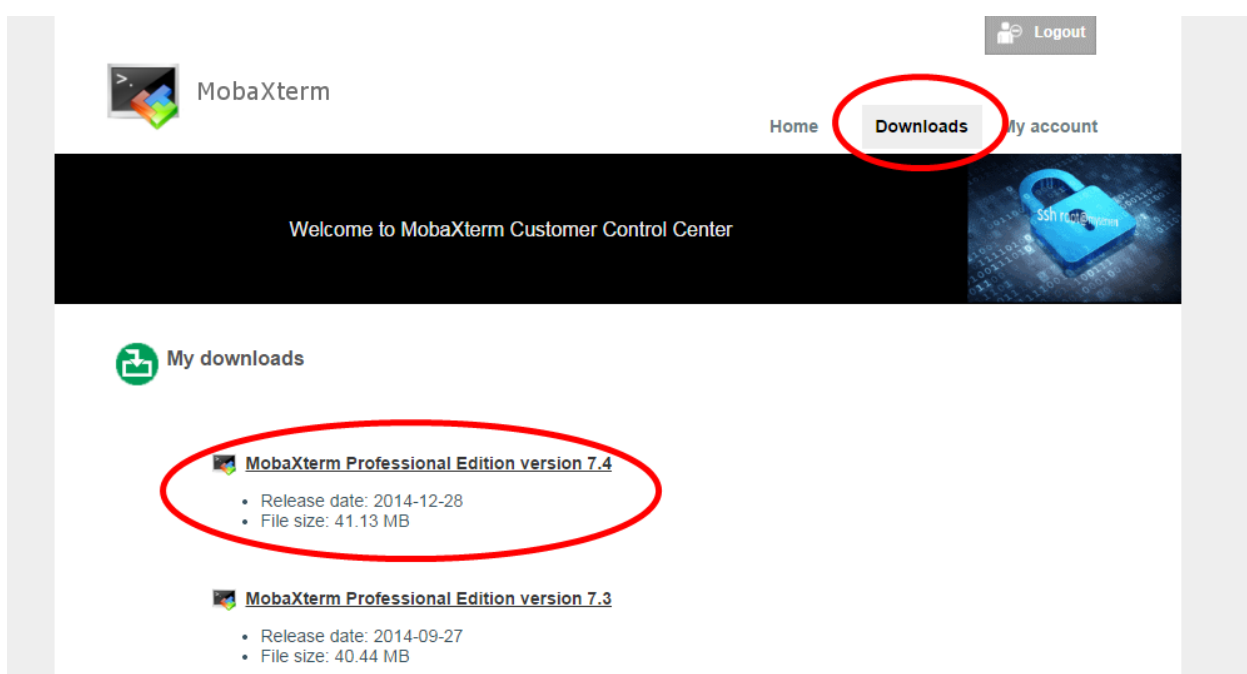
Thank you for registering MobaXterm professional edition!

This document will explain how to set up MobaXterm and how to install the software in your environment.

2. Download your MobaXterm professional package

Following your registration, you have access to the Mobatek download center (<https://ccc.mobatek.net>) with a login and password.

From this customer area, you can download your MobaXterm professional copy from the “Downloads” menu.



: Note that your future updates will be made available from this customer area

After having downloaded your version (zip file), you can open the following files:

- **MobaXterm_Professional_X.X.exe** : MobaXterm Professional software in portable version
- **MobaXterm_Customizer_X.X.exe** : MobaXterm Professional Customizer allowing you to change MobaXterm parameters and generate your customized MobaXterm portable or installable version
- **MobaXterm Terms And Condition.pdf**
- **This documentation** (PDF file)



3. Use MobaXterm portable version

If you want to use MobaXterm in its portable version, just extract the file MobaXterm_Professional_X.X.exe in any directory on your computer and launch the executable.

4. How to get MobaXterm installable version?

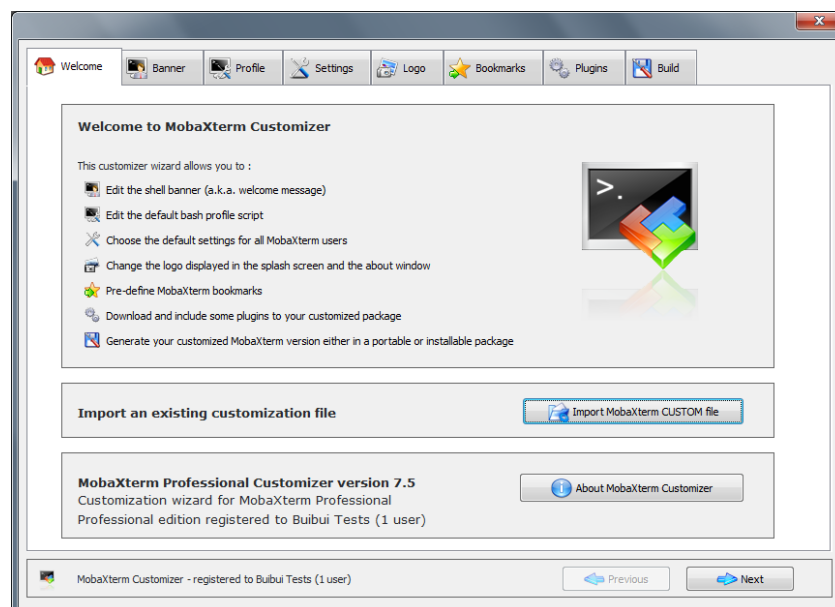
The MobaXterm professional package does not include the MSI installer. The reason is that the **MobaXterm customizer allows you to generate your own MSI package** with your pre-defined settings.

In order to generate the installable version, please follow the steps described in the next chapter (How to Customize MobaXterm).

5. How to customize MobaXterm?

Using MobaXterm Customizer, you will be able to generate customized copies of MobaXterm with your own logo and your default settings. Settings specified in the Customizer will be hard-coded within the generated executable itself.

In order to perform this operation, just launch MobaXterm_Customizer_X.X.exe
This will launch the following graphical interface:



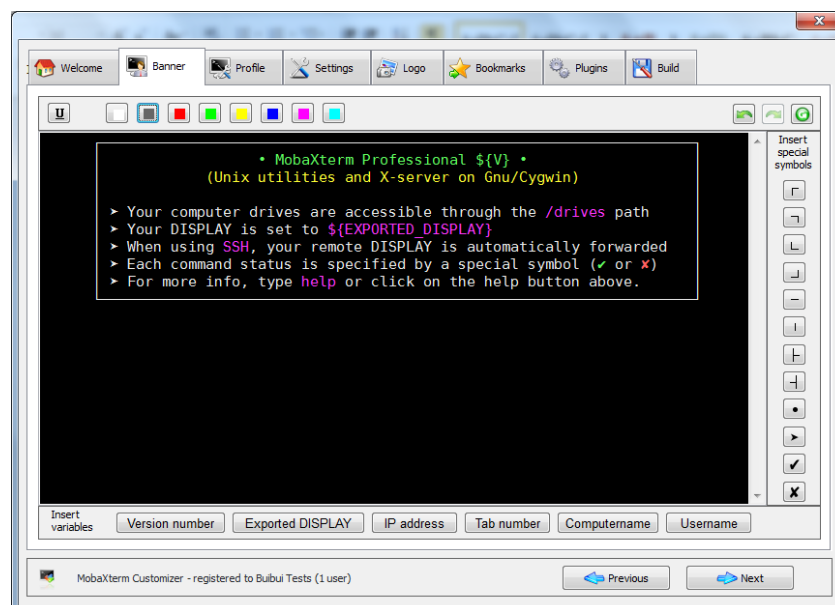
The MobaXterm customizer is based on a step-by-step process. You just have to select your parameters (or leave default settings) and select the “Next” button to proceed to the second step.

The different steps are described hereunder:



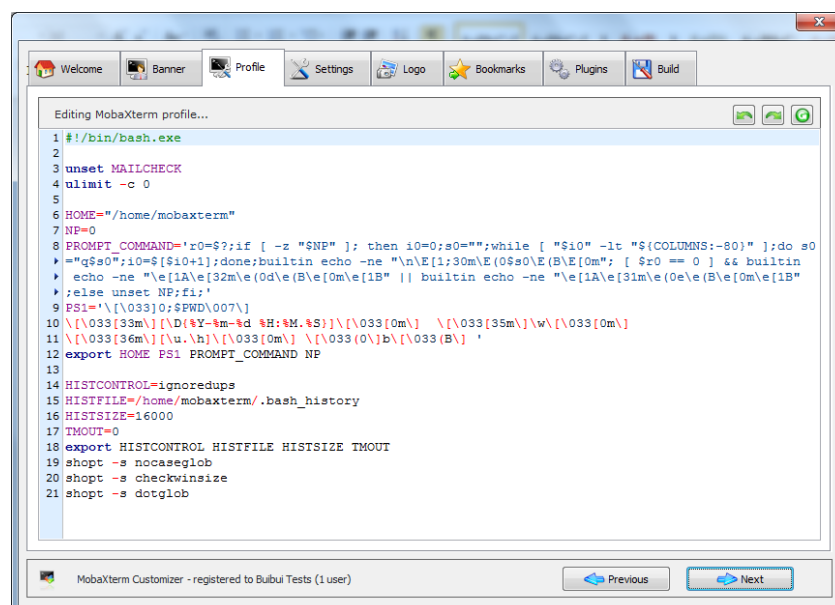
Step 1: Banner customization

In this step you can configure the banner that will be displayed at MobaXterm startup. Of course, if you do not have special requirement about the banner, leave the default text, and select “Next”.



Step 2: Profile customization

In this step, you will have access to the default profile used at MobaXterm startup. This profile is the equivalent of the “/etc/profile” file on Linux operating system. If you are not familiar with profile principles, please keep the default profile and “select “Next”.



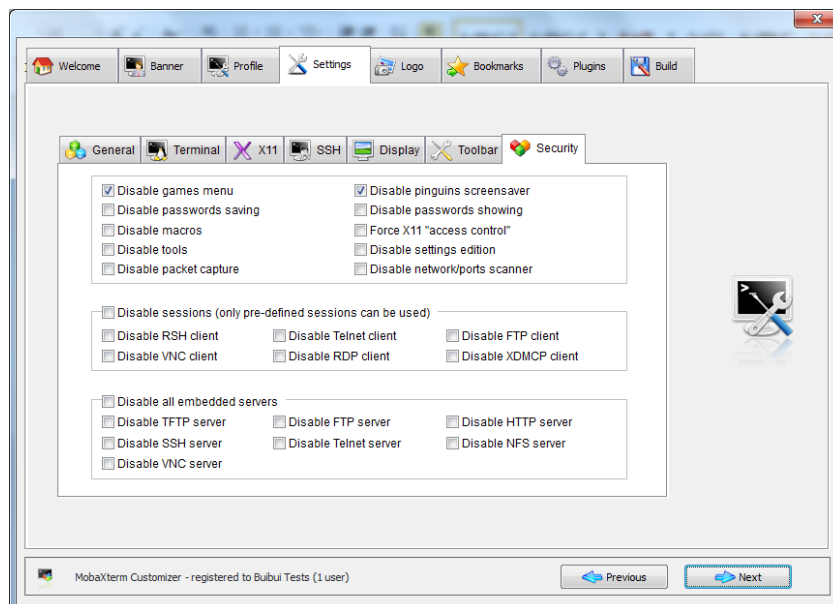


Step 3: Settings customization

In this step, you will have a list of the different MobaXterm features. The customizer allows you to enable or disable these features.

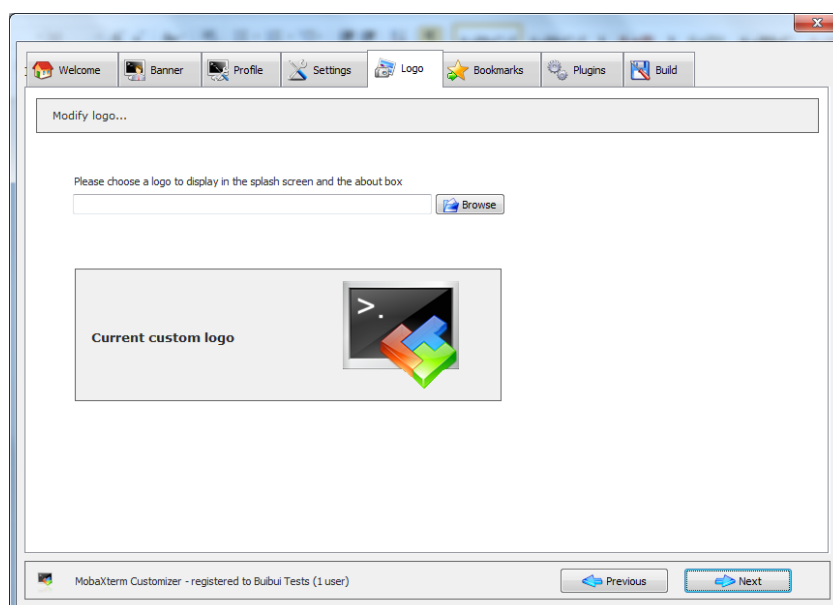
The settings allow you to remove games, screensaver or even disable insecure protocols such as RSH, Rlogin or Telnet.

All these parameters will become the default settings of the generated MobaXterm application.



Step 4: Logo customization

In this step, you can choose to set your own logo for the MobaXterm startup and about windows. Just select “Browse” and pick a picture from your computer.

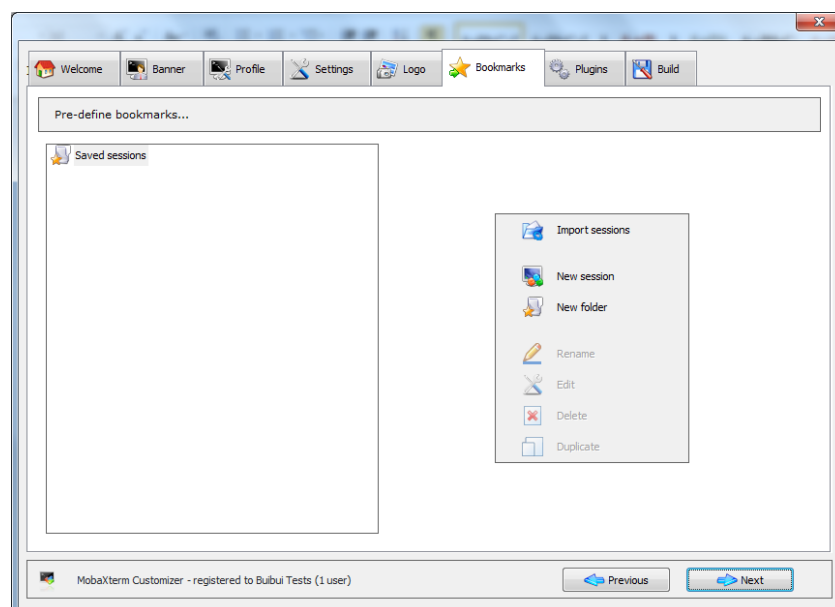




Step 5: Bookmarks customization

In this step, you will have the possibility to pre-define MobaXterm sessions. For example you can add SSH sessions and organize these sessions in different folders.

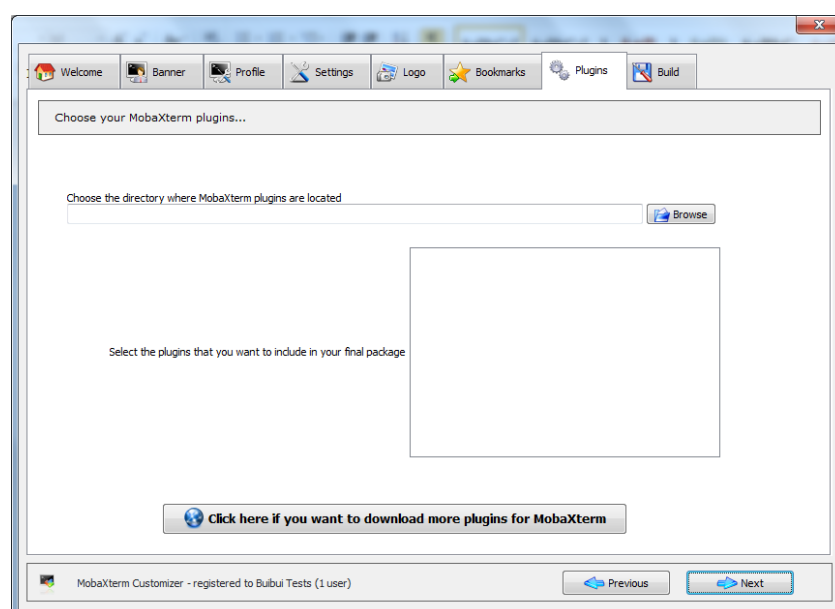
After MobaXterm generation, users will have access to these pre-defined sessions. Please note that no password can be stored in the customizer.



Step 6: Plugins integration

In this step, you will have the possibility to add plugins to your MobaXterm customized package. In order to get plugins, please visit <http://mobaxterm.mobatek.net/plugins.html> and download the requested plugin. Then just add it thanks to the “Browse” button.

Note that plugins have the file extension “MXT3”.



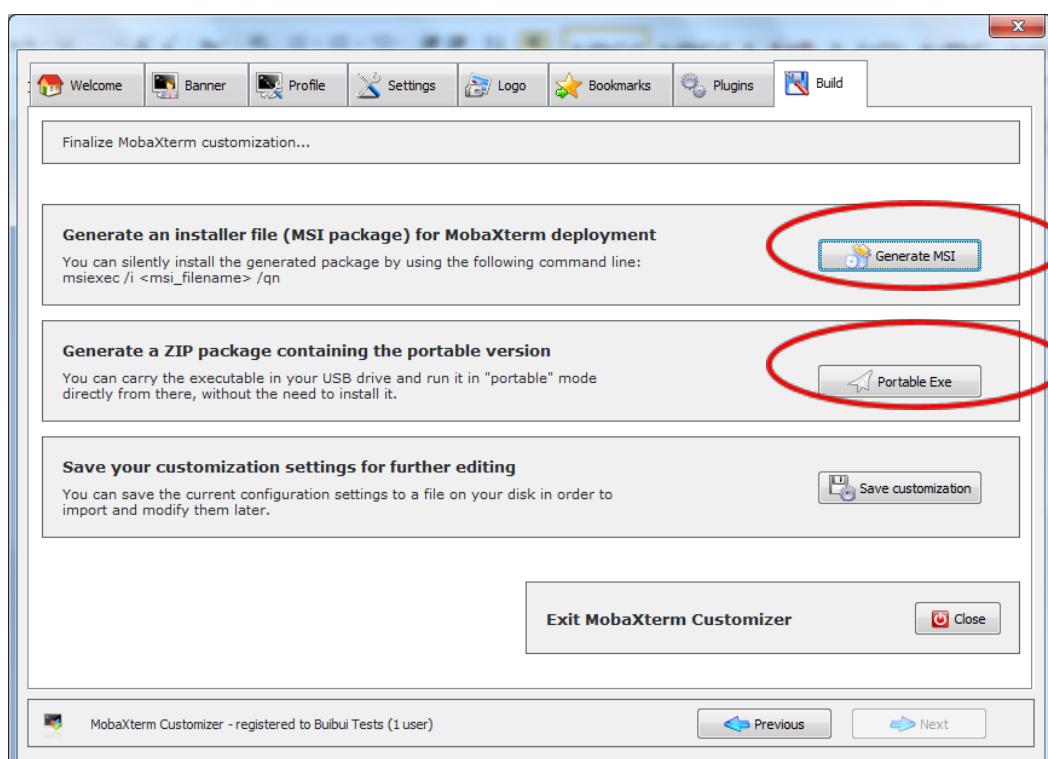


Step 7: Generate your customized copy / save settings

This step is the last step of the Customizer. The build function allows you to generate your own MobaXterm copy which includes all the settings chosen in previous steps.

From this step you can generate an installation package (MSI file) by clicking on “Generate MSI” button.

You have also the possibility to create a customized portable version, by clicking on the “Portable exe button”



Finally you also have the possibility to save your customization settings and export them to a file, using the “Save Customization” button. This will allow you to open it later, or to keep it in order to apply the same settings on any further update of MobaXterm.



6. What is the best way to secure MobaXterm installation?

MobaXterm is already a secure program: its SSH connections are encrypted using well-known algorithms, its sources are available so that anyone can audit them, its passwords can be stored with strong encryption.

However, depending on your company security rules, you can disable some features which may be considered as unsafe: in the "customizer" program, go to the "Settings" tab, then to the "Security" tab. Each setting can be leaved unchecked (less secure) or checked (more secure), you will have to make some choices between features and security.

For instance:

- if users do not use any of the embedded servers, we recommend to check the "Disable servers" box.
- if users do not need any packet capture or network scanner / port scanner tools, we recommend to check the corresponding items
- you may also consider the possibility in your environment, to disable insecure protocols such as telnet, rlogin or ftp and use SSH / SFTP instead.

7. More help for using MobaXterm?

You can find more help, frequently asked question, and an entire "How to" chapter on our website at the following address: <http://mobaxterm.mobatek.net/documentation.html>

END OF DOCUMENT